

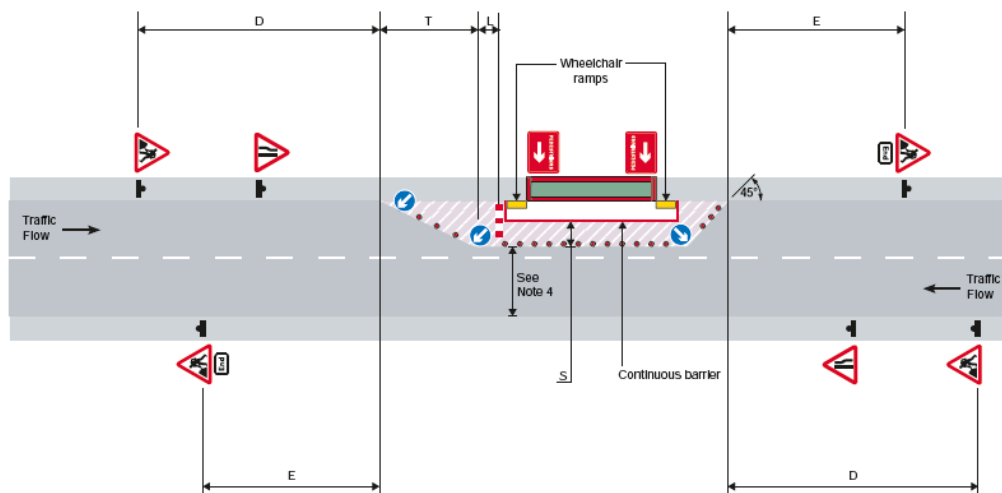


Ramping Up!!

The use of ramps

When pedestrians are diverted to temporary walkways in the carriageway, suitable ramps or existing drop kerbs **must be provided** to enable people using wheelchairs or pushchairs to negotiate their way into any temporary walkway safely. The layout should also where possible allow wheelchair and scooter users to manoeuvre into and exit a temporary walkway easily, this may mean creating a wider space at each end. Ramps and boards must be fit for purpose.

Works on footway with pedestrian diversion into carriageway



DO's & DON'Ts

- **DO** Undertake a site-specific risk assessment before starting work.
- **DO** Make sure the site is protected by barriers and correct signs are in place and secure.
- **DO** Consider an alternative pedestrian route, position for the works or minimising of the work area including the placement of spoil to negate the need for temporary walkway.
- **DO** Check that if you place a walkway in the carriageway, you do not require additional traffic management.
- **DO** Check that the footway ramp is fit for purpose with a skid resistant surface and free from cracks or broken edges.
- **DO** Check the ramp cannot be moved by normal use if so it may require fixing
- **DO** Make sure the ramp slopes gently enough to enable people using wheelchairs to mount the kerb without difficulty.
- **DO** Check your site during the day and before you leave to ensure all ramps are still in position and secure.
- **DON'T** Start work without a risk assessment.
- **DON'T** Start work without making sure your barriers and signs are in place.
- **DON'T** Use wood, spoil, bitumen or other materials as a ramp. Always use a approved footway ramp.
- **DON'T** Block drainage channels
- **DON'T** Lever ramps from any fixings. Unscrew them properly to prevent damage!
- **DON'T** Close a footway (without a walkway) without prior communication with your supervisor and the Highway Authority.

HAUC(UK) thanks Morrison Water Services in their help in the creation of this guidance.